

**Project:**

**Note:**

**Type:**

**Quantity:**

**Model#:** NAN -      -      -      -      -      - SO -     

**Description**

Nano vanity lights represent extraordinary value. The super-efficient LED light source inside the minimal geometric form illuminates the white frosted acrylic diffuser.

**Features**

- Stamped Steel construction
- Frosted acrylic extruded diffuser
- Driver located in back plate
- Damp location rated
- JAB-2016 Listed

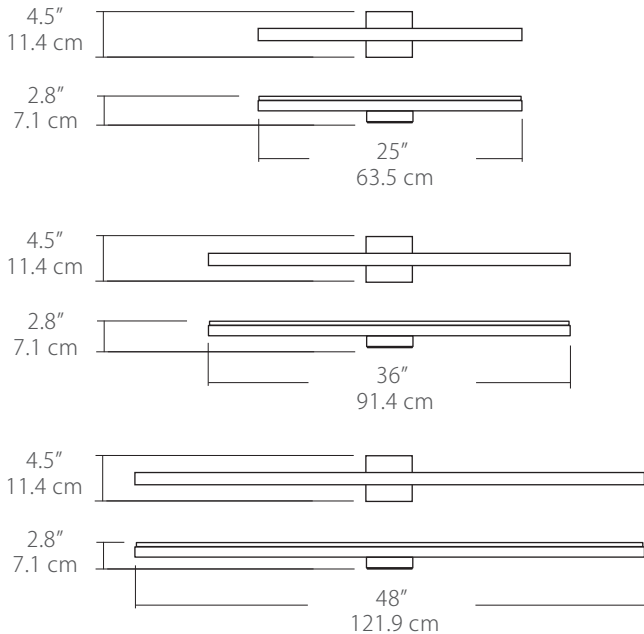


**Specifications (Standard)**

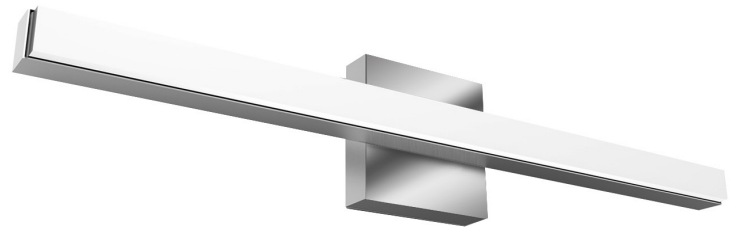
- Color Rendering Index: 90CRI
- LED Color Temperature: 3000K (standard)
- Input Voltage: 120VAC 50/60Hz
- Lamping: 25" - 17W, 36" - 20W, 48" - 40W
- Lumens: 25" - 806lm, 36" - 995lm, 48" - 2000lm (Lumens measured in 3000K)
- Fixture Weight: 25" - 3.3lb (1.5kg), 36" - 8.4lb (3.8kg), 48" - 13.5lb (6.12kg)
- Dimming: TRIAC dimmable
- For recommended dimmers see <https://www.blackjacklighting.com/dimming-information>

**Options**

- Upgradable to 120-277V input driver with Universal Dimming
- Standard Finishes: PC - Polished Chrome, SN - Satin Nickel
- Special Order Powder Coat Finishes: BL - Matte Black, BZ - Bronze or SG - Satin Gold
- Color Temperature: 2700K, 3000K, 3500K or 4000K
- Backplate: DB - Deep backplate (standard) or S4 - 4.6" Shallow backplate (Not available for 48")



(Shown above with Standard DB Backplate)



**Shown Above:**  
NAN-25V-PC-12T-30K-SO-DB



**ORDERING GUIDE**

Family	Size	Finish	Volts/Dimming	Color Temp.	Output	Backplate
<b>NAN</b>				<b>30K</b>	<b>SO</b>	
NAN Nano	<b>25V</b> 25" Vanity <b>36V</b> 36" Vanity <b>48V</b> 48" Vanity	<b>Standard</b> PC Polished Chrome SN Satin Nickel <b>Special Order</b> BL Matte Black BZ Bronze SG Satin Gold	<b>12T</b> 120VAC TRIAC Dimming <b>27U</b> 120-277VAC Universal Dimming	<b>27K</b> 2700K <b>30K</b> 3000K <b>35K</b> 3500K <b>40K</b> 4000K  (30K Standard)	<b>SO</b> Standard Lumen Output	<b>DB</b> Standard Deep Backplate (Driver located in backplate) <b>S4</b> 4.6" Shallow Backplate (Driver located inside the junction box) (Not available for 48")

Example: NAN-25V-BZ-12T-30K-SO-S4

**Finishes**

<p><b>Finish</b></p> <div style="background-color: #cccccc; width: 20px; height: 20px; margin: 5px 0;"></div> <p>PC SN BL BZ SG</p>	
	<p><b>PC</b> - Polished Chrome      <b>SN</b> - Satin Nickel      <b>BL</b> - Matte Black      <b>BZ</b> - Bronze      <b>SG</b> - Satin Gold</p>
	<p>Standard Finishes      Special Order Powder Coat Finishes</p>

**Volts/Dimming**

<p><b>Volts/Dimming</b></p> <div style="background-color: #cccccc; width: 20px; height: 20px; margin: 5px 0;"></div> <p>12T 27U</p>	<p><b>12T:</b> Input: 120V , Dimming: TRIAC (Standard)</p> <p><b>27U:</b> Input: 120-277V , Dimming: TRIAC/ ELV/ 0-10V (Special Order)</p>
---	--

**Color Temperature**

<p><b>Color Temp.</b></p> <div style="background-color: #cccccc; width: 20px; height: 20px; margin: 5px 0;"></div> <p>27K 30K 35K 40K</p>	<p><b>27K</b> - 2700K</p> <p><b>30K</b> - 3000K (Standard)</p> <p><b>35K</b> - 3500K</p> <p><b>40K</b> - 4000K</p>
---	--

**Backplates**

<p><b>Backplates</b></p> <div style="background-color: #cccccc; width: 20px; height: 20px; margin: 5px 0;"></div> <p>DB S4</p>		
	<p><b>DB</b> - Deep Backplate (4.6" H, 4.6" W, 1.3" D) Driver located inside backplate <b>Standard Backplate</b></p>	<p><b>S4</b> - 4.6" Shallow Backplate (4.6" H, 4.6" W, .5" D) Driver located inside J-box <b>Special Order Backplate</b> (Not available for 48" backplate)</p>