

Project:

Note:

Type:

Quantity:

Model#: NAN - - - - - - SO -

Description

Nano vanity lights represent extraordinary value. The super-efficient LED light source inside the minimal geometric form illuminates the white frosted acrylic diffuser.

Features

- Stamped Steel construction
- Frosted acrylic extruded diffuser
- Driver located in back plate
- Damp location rated
- JAB-2016 Listed

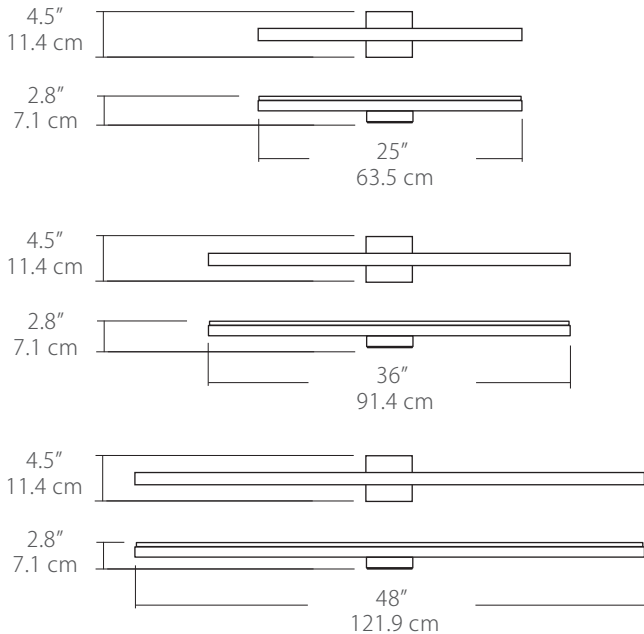


Specifications (Standard)

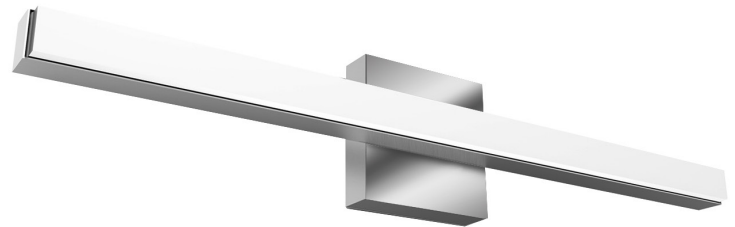
- Color Rendering Index: 90CRI
- LED Color Temperature: 3000K (standard)
- Input Voltage: 120VAC 50/60Hz
- Lamping: 25" - 17W, 36" - 20W, 48" - 40W
- Lumens: 25" - 806lm, 36" - 995lm, 48" - 2000lm (Lumens measured in 3000K)
- Fixture Weight: 25" - 3.3lb (1.5kg), 36" - 8.4lb (3.8kg), 48" - 13.5lb (6.12kg)
- Dimming: TRIAC dimmable
- For recommended dimmers see <https://www.blackjacklighting.com/dimming-information>

Options

- Upgradable to 120-277V input driver with Universal Dimming
- Standard Finishes: PC - Polished Chrome, SN - Satin Nickel
- Special Order Powder Coat Finishes: BL - Matte Black, BZ - Bronze or SG - Satin Gold
- Color Temperature: 2700K, 3000K, 3500K or 4000K
- Backplate: DB - Deep backplate (standard) or S4 - 4.6" Shallow backplate (Not available for 48")



(Shown above with Standard DB Backplate)



Shown Above:
NAN-25V-PC-12T-30K-SO-DB



ORDERING GUIDE

Family	Size	Finish	Volts/Dimming	Color Temp.	Output	Backplate
NAN				30K	SO	
NAN Nano	25V 25" Vanity 36V 36" Vanity 48V 48" Vanity	PC Polished Chrome SN Satin Nickel BL Matte Black BZ Bronze SG Satin Gold	12T 120VAC TRIAC Dimming 27U 120-277VAC Universal Dimming	27K 2700K 30K 3000K 35K 3500K 40K 4000K	SO Standard Lumen Output	DB Standard Deep Backplate (Driver located in backplate) S4 4.6" Shallow Backplate (Driver located inside the junction box) (Not available for 48")

Example: NAN-25V-BZ-12T-30K-SO-S4

(30K Standard)

Finishes

<p>Finish</p> <div style="border: 1px solid black; width: 20px; height: 20px; margin: 5px 0;"></div> <p>PC SN BL BZ SG</p>	
	<p>PC - Polished Chrome SN - Satin Nickel BL - Matte Black BZ - Bronze SG - Satin Gold</p> <p>Standard Finishes Special Order Powder Coat Finishes</p>

Volts/Dimming

<p>Volts/Dimming</p> <div style="border: 1px solid black; width: 20px; height: 20px; margin: 5px 0;"></div> <p>12T 27U</p>	<p>12T: Input: 120V , Dimming: TRIAC (Standard)</p> <p>27U: Input: 120-277V , Dimming: TRIAC/ ELV/ 0-10V (Special Order)</p>
---	--

Color Temperature

<p>Color Temp.</p> <div style="border: 1px solid black; width: 20px; height: 20px; margin: 5px 0;"></div> <p>27K 30K 35K 40K</p>	<p>27K - 2700K</p> <p>30K - 3000K (Standard)</p> <p>35K - 3500K</p> <p>40K - 4000K</p>
---	--

Backplates

<p>Backplates</p> <div style="border: 1px solid black; width: 20px; height: 20px; margin: 5px 0;"></div> <p>DB S4</p>	<p>DB - Deep Backplate (4.6" H, 4.6" W, 1.3" D) Driver located inside backplate Standard Backplate</p>	<p>S4 - 4.6" Shallow Backplate (4.6" H, 4.6" W, .5" D) Driver located inside J-box Special Order Backplate (Not available for 48" backplate)</p>
--	--	--