

Project:

Type:

Quantity:

Note:

SKU#: C - MCL - 2012 - - 27V -

Features

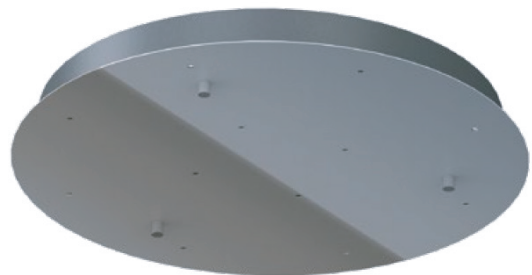
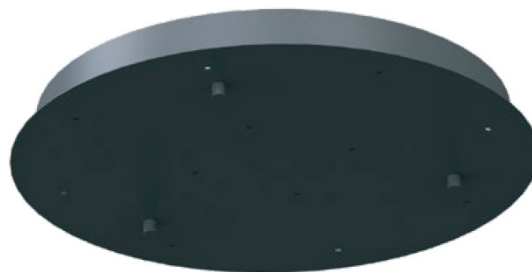
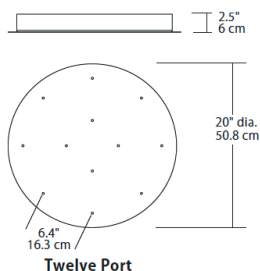
- Standard black or polished chrome faceplate (with a black housing)
- Canopy comes without pendants (ordered separately)
- When ordered with pendants, canopy ships with pendants assembled and pre-installed on canopy
- Fabricated steel construction
- Driver located in canopy housing
- Damp location rated

Specifications

- Input Voltage: 120-227 VAC 50/60Hz
- Dimming: TRIAC, ELV or 0-10V dimmable
- Wattage: 20W driver is standard for 20" canopy
- For recommended dimmers and downloadable IES & LM 79 files, see blackjacklighting.com

Custom

- Available with white front faceplate



DRIVER COMPATIBILITY

Pendant Series	Watts	Driver
Light Guide Series	2W	40W
Color Gel Series	2W	40W
Artisan Ring Series	2W	40W
Velo Glass Series	2W	40W
Globe 3" Series	2W	40W
Globe 5" Series	5W	96W
Bullet 4" Series	2W	40W
Bullet 8" Series	5W	96W
Sphere 8" Series	2W	40W
Sphere 12" Series	5W	NR
Novo Tall Series	5W	96W
Novo Short Series	5W	96W
Pill Box 10" Series	5W	NR
Domos 16" Series	5W	NR

NR (Not Recommended)

**PENDANTS TO
BE ORDERED
SEPARATELY**



ORDERING GUIDE

Family	Size/Type	Finish
C-MCL	2012	
	2012" 20" Length/12Ports	BL Matte Black PC Polished Chrome

CUSTOM OPTIONS

Volts/Dimming	Driver Watts
27V	40W
27V 120-277VAC, TRIAC, ELV or 0-10V Dimming	40W 40 Watt Driver 60W 60 Watt Driver

Example: C-MCL-2012-BL-27V-20W

(27V Standard)

(20W Standard)