

Project:
Note:
Type:
Quantity:
Model#:
C
-
MCR
-
2003
-
-
-
-
-
-
-
-
-
-

Features

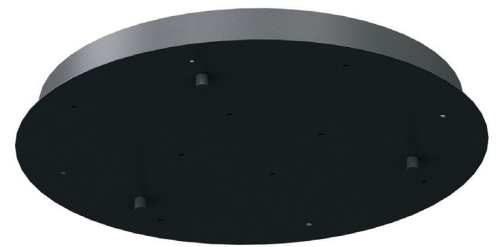
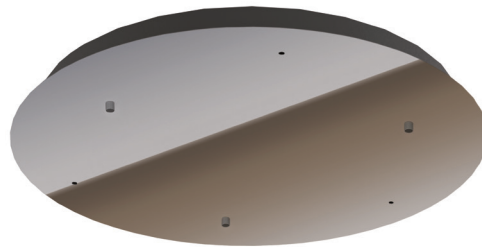
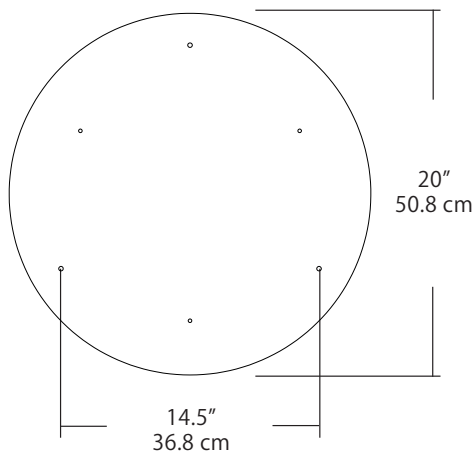
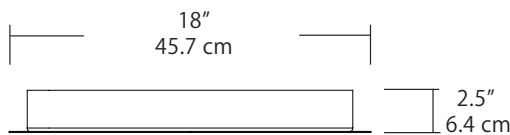
- Black, or Polished chrome faceplate (with a black housing), White faceplate (with a white housing)
- Canopy comes without pendants (ordered separately)
- When ordered with pendants, canopy ships with pendants assembled and pre-installed on canopy
- Fabricated steel construction
- Powder coated paint finishes
- Driver located in canopy housing
- Damp location rated

Specifications

- Input Voltage: 100-277 VAC 50/60Hz
- Dimming: TRIAC, ELV or 0-10V Dimmable
- For recommended dimmers see <https://www.blackjacklighting.com/dimming-information>

Options

- Available with Integral or Remote driver
- Optional Lutron driver available
- Standard Finishes: BL-Matte Black, PC-Polished Chrome (with black housing) or WH-White (with white housing)
- Special Order Powder Coat Finishes (with black housing): BZ - Bronze, SG - Satin Gold or SS - Satin Silver



Pendants sold separately. For options see pages 2 and 3
 For driver options see page 4



CANOPY ORDERING GUIDE

Series	Size/ Type	Finish	Power Supply	Driver Watts
C-MCR	2003			
	2003" 20" Diameter 3 Ports	Standard BL Matte Black PC Polished Chrome WH White Spec. Order BZ Bronze SG Satin Gold SS Satin Silver Custom CS Customer Specification	Universal _ Integral (standard) (Leave blank for standard option) R Remote Custom C Customer Selection (consult factory)	15W 15 Watts 20W 20 Watts 40W 40 Watts
Example: C-MCR-2003-BL-_-20W		(For driver information see pg 4)		

WATTAGE GUIDE

Pendant Watts	Ports	Recommended Driver
2W	3 Ports	15W
5W	3 Ports	20W
12W	3 Ports	40W

For other variations consult factory

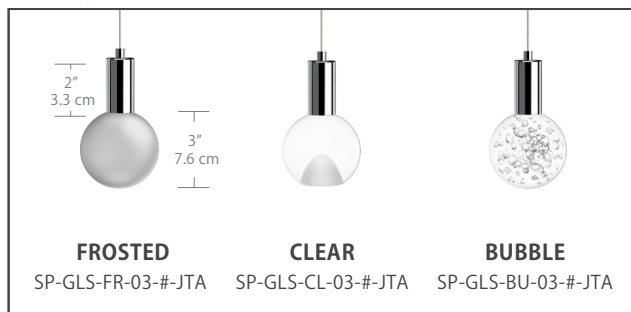
Pendants sold separately. For full specifications and ordering information see www.Blackjacklighting.com

(# symbol indicates additional specification)

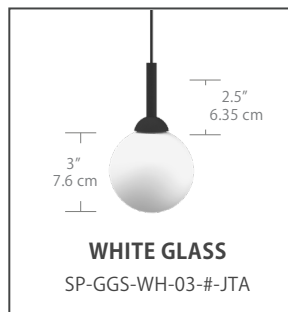
Light Guide - 2W/ 87lm



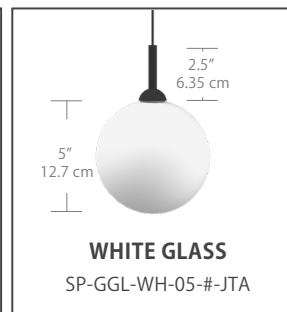
3" Acrylic Globe - 2W / 87lm



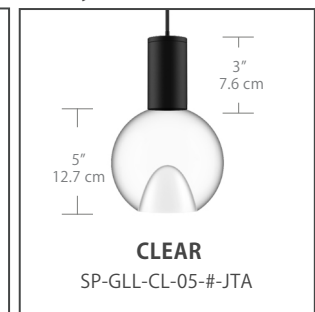
3" Glass Globe - 2W/87lm



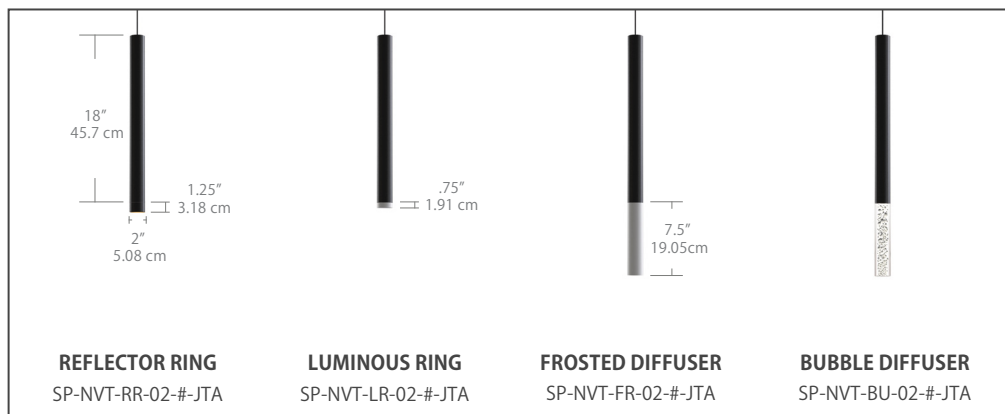
5" Glass Globe - 2W/ 87lm



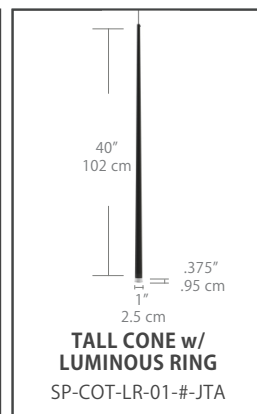
5" Acrylic Globe - 5W/ 368lm



Novo Tall - 5W/ 368lm



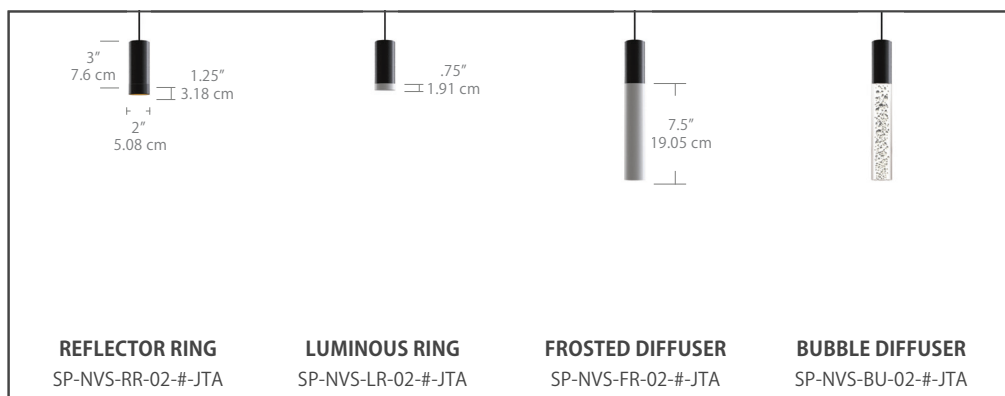
Cone Tall - 2W/ 87lm



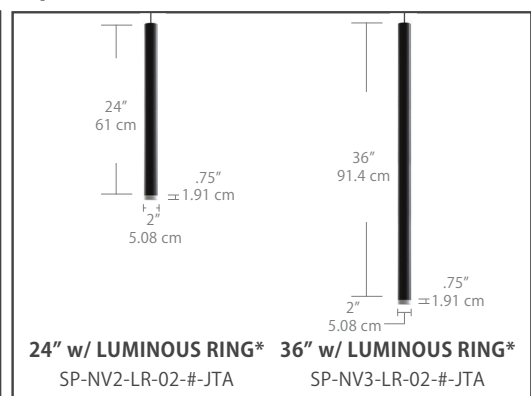
Cone Short - 2W/ 87lm



Novo Short - 5W/ 368lm



Special Order Novo - 5W/ 368lm



Lumen values are delivered lumens

* Special order only Novo 24" and 36" can be used with any Novo Tall or Novo Short diffuser

Pendants sold separately. For full specifications and ordering information see www.Blackjacklighting.com

(# symbol indicates additional specification)

8" Glass Sphere - 2W/ 87lm



12" Glass Sphere - 5W/ 368lm



4" Bullet - 2W/ 87lm



8" Bullet - 5W/ 368lm



Color Gel - 2W/ 87lm



10" Pill Box - 12W/ (Gold interior = 700lm , White interior = 800lm)



5" Velo - 2W/ 87lm



16" Domos - 12W/ (Gold interior = 700lm , White interior = 800lm)



Lumen values are delivered lumens

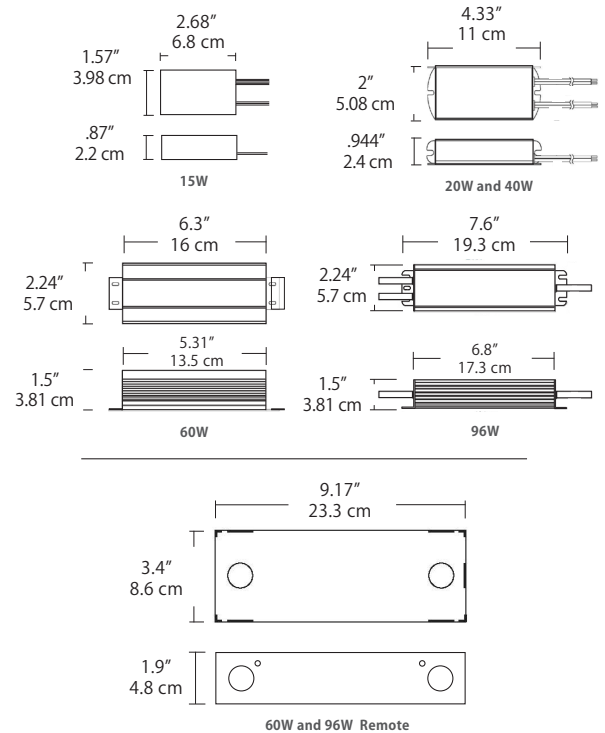
For more details and ordering information, consult factory

I. Universal Drivers

Universal dimmable (TRIAC, ELV or 0-10V), Flicker-free dimming 100% to 2% (with optimal configuration), auto reset, short circuit, overload and thermal protection



Watts	Output Volts	Input Volts	Mounting	Comments
15W	24V	120V - 277V	- Integral	(27U)
20W	24V	120V - 277V	- Integral	(27U)
40W	24V	100V - 305V	- Integral	(27U)
60W	24V	120V - 277V	- Integral	(27U)
96W	24V	120V - 277V	- Integral	(27U)
60W	24V	120V - 277V	- Remote	(27U)
96W	24V	120V - 277V	- Remote	(27U)

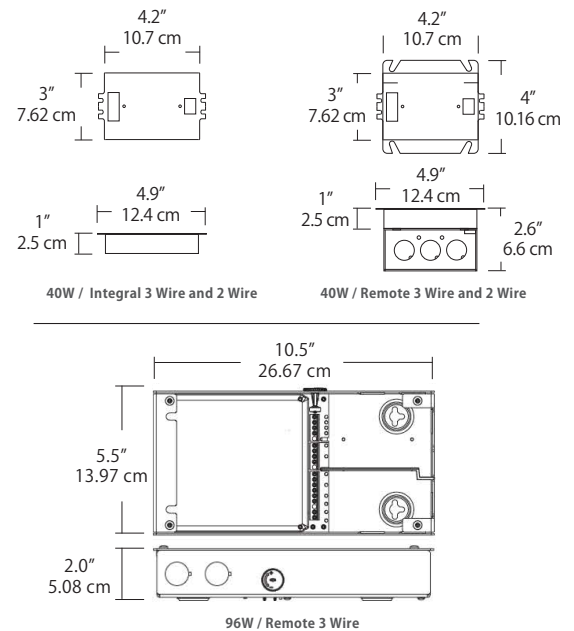


II. LUTRON Hi-Lume Drivers

Continuous flicker-free dimming, auto reset, short circuit, overload and thermal protection
Compatible with most Lutron dimming control systems



Watts	Output Volts	Input Volts	Mounting	Comments
40W	24V	120V - 277V	- Inside Canopy	3 Wire (27E) Dims 100% - 1%
40W	24V	120V	- Inside Canopy	2 Wire (12T) Dims 100% - 1%
40W	24V	120V - 277V	- Remote	3 Wire (27E) Dims 100% - 1%
40W	24V	120V	- Remote	2 Wire (12T) Dims 100% - 1%
96W	24V	120V - 277V	- Remote	3 Wire (27E) Dims 100% - .1%



ORDERING GUIDE

Category

PS

PS Power Supply

Type

94ST Standard (Universal)
94LT Lutron
94CS Customer Specification

Watts

15W 15 Watts
20W 20 Watts
40W 40 Watts
60W 60 Watts
96W 96 Watts

Dimming

12T TRIAC Dimming
27U 120-277V/ Universal
Dimming (TRIAC, ELV, 0-10V)
27E 120-277V/ Lutron EcoSystem

Mounting

IN Integral
RE Remote

Example: PS-94ST-96W-27U-RE