

**Project:**
**Note:**
**Type:**
**Quantity:**
**Model#:**
**C**
**-**
**MCR**
**-**
**1003**
**-**
**-**
**-**
**-**
**-**
**-**
**-**
**-**
**-**
**-**

## Features

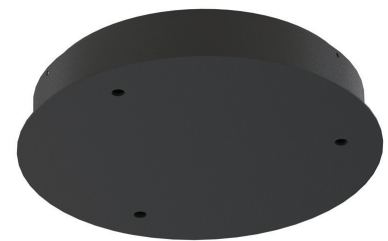
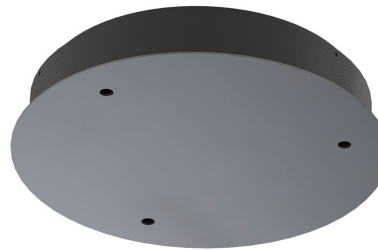
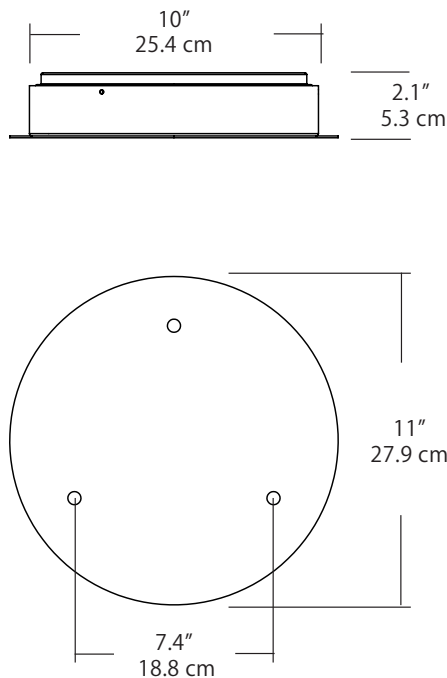
- Black or Polished chrome faceplate (with a black housing), White faceplate (with white housing)
- Canopy comes without pendants (ordered separately)
- When ordered with pendants, canopy ships with pendants assembled and pre-installed on canopy
- Fabricated steel construction
- Powder coated paint finishes
- Driver located in canopy housing
- Damp location rated

## Specifications

- Input Voltage: 100-277 VAC 50/60Hz
- Dimming: TRIAC, ELV or 0-10V Dimmable
- For recommended dimmers see <https://www.blackjacklighting.com/dimming-information>

## Options

- Available with Integral or Remote driver
- Optional Lutron driver available
- Standard Finishes: BL-Matte Black, PC-Polished Chrome (with black housing) or WH-White (with white housing)
- Special Order Powder Coat Finishes (with black housing): BZ - Bronze, SG - Satin Gold or SS - Satin Silver



Pendants sold separately. For options see pages 2 and 3  
 For driver information see page 4



## CANOPY ORDERING GUIDE

Series	Size/ Type	Finish	Power Supply	Wattage
C-MCR	1003			
	1003" 10" Diameter 3 Ports	<b>Standard</b> BL Matte Black PC Polished Chrome WH White <b>Spec. Order</b> BZ Bronze SG Satin Gold SS Satin Silver <b>Custom</b> CS Customer Specification	<b>Universal</b> — Integral (standard) (Leave blank for standard option) R Remote <b>Custom</b> C Customer Selection (consult factory) (For driver information see pg 4)	<b>15W</b> 15 Watts(not available in Lutron driver)(Integral only) <b>20W</b> 20 Watts (Not available in Lutron Driver)(Integral only) <b>40W</b> 40 Watts

Example: C-MCR-1003-BL-\_-20W

## WATTAGE GUIDE

Pendant Watts	Ports	Recommended Driver
2W	3 Ports	15W
5W	3 Ports	20W
12W	3 Ports	40W

For other variations consult factory

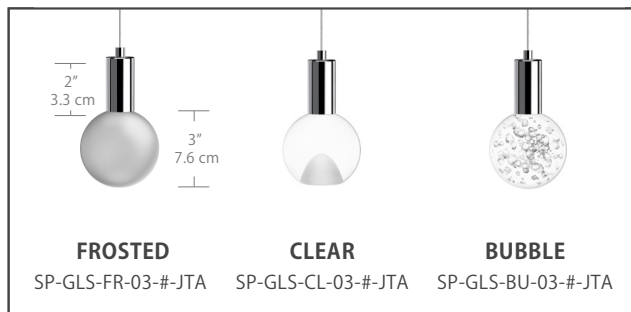
Pendants sold separately. For full specifications and ordering information see [www.Blackjacklighting.com](http://www.Blackjacklighting.com)

(# symbol indicates additional specification)

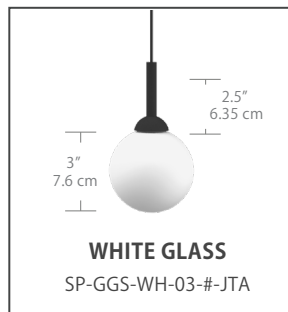
## Light Guide - 2W/ 87lm



## 3" Acrylic Globe - 2W / 87lm



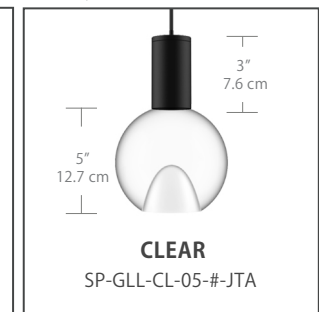
## 3" Glass Globe - 2W/87lm



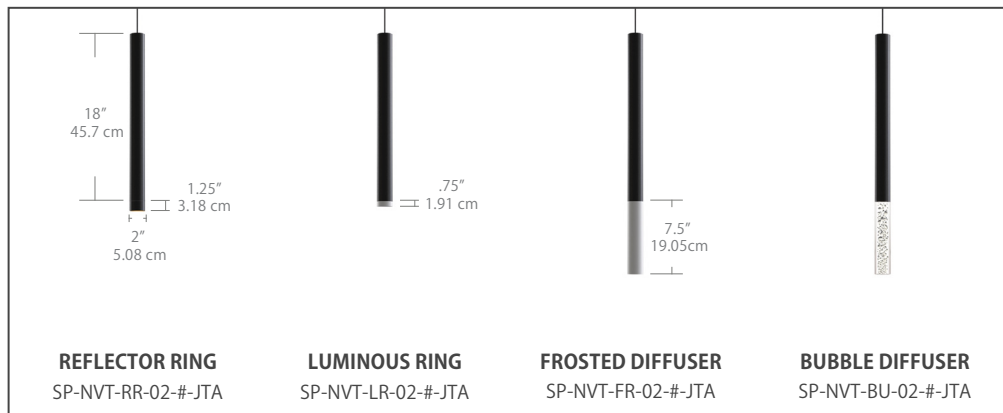
## 5" Glass Globe - 2W/ 87lm



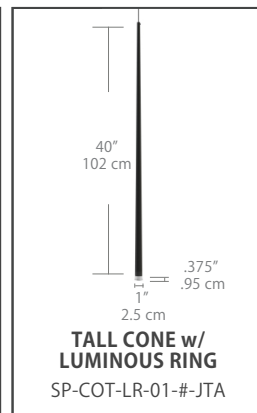
## 5" Acrylic Globe - 5W/ 368lm



## Novo Tall - 5W/ 368lm



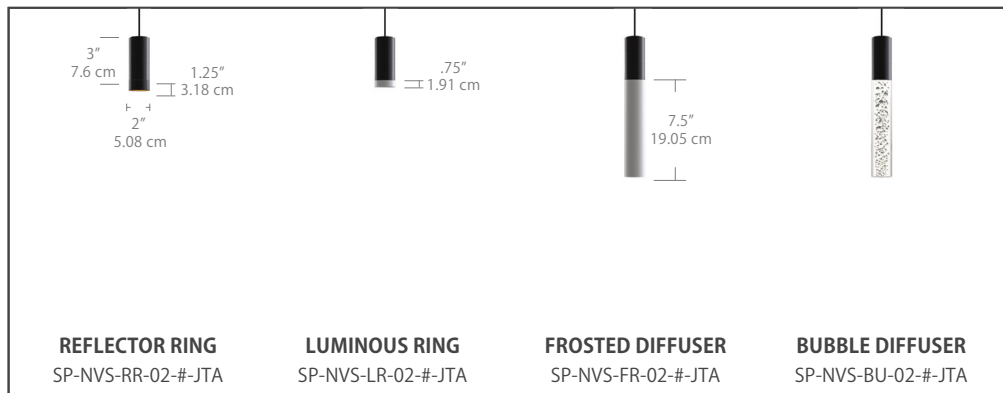
## Cone Tall - 2W/ 87lm



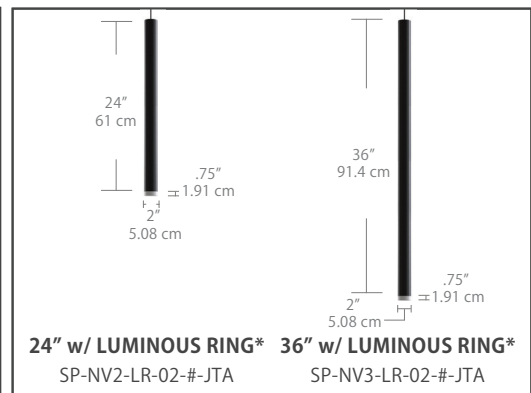
## Cone Short - 2W/ 87lm



## Novo Short - 5W/ 368lm



## Special Order Novo - 5W/ 368lm



Lumen values are delivered lumens

\* Special order only Novo 24" and 36" can be used with any Novo Tall or Novo Short diffuser

Pendants sold separately. For full specifications and ordering information see [www.Blackjacklighting.com](http://www.Blackjacklighting.com)

(# symbol indicates additional specification)

## 8" Glass Sphere - 2W/ 87lm



## 12" Glass Sphere - 5W/ 368lm



## 4" Bullet - 2W/ 87lm



## 8" Bullet - 5W/ 368lm



## Color Gel - 2W/ 87lm



## 10" Pill Box - 12W/ (Gold interior = 700lm , White interior = 800lm)



## 5" Velo - 2W/ 87lm



## 16" Domos - 12W/ (Gold interior = 700lm , White interior = 800lm)



Lumen values are delivered lumens

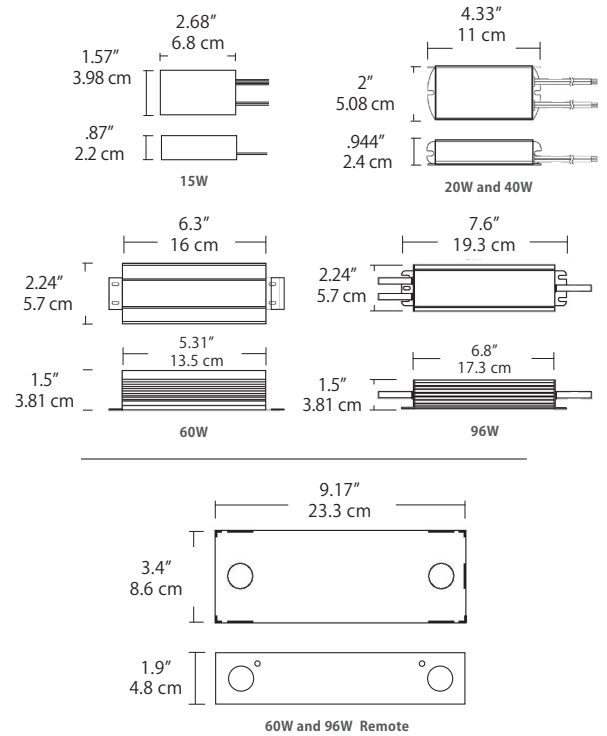
For more details and ordering information, consult factory

## I. Universal Drivers

Universal dimmable (TRIAC, ELV or 0-10V), Flicker-free dimming 100% to 2% (with optimal configuration), auto reset, short circuit, overload and thermal protection



Watts	Output Volts	Input Volts	Mounting	Comments
15W	24V	120V - 277V	- Integral	(27U)
20W	24V	120V - 277V	- Integral	(27U)
40W	24V	100V - 305V	- Integral	(27U)
60W	24V	120V - 277V	- Integral	(27U)
96W	24V	120V - 277V	- Integral	(27U)
60W	24V	120V - 277V	- Remote	(27U)
96W	24V	120V - 277V	- Remote	(27U)

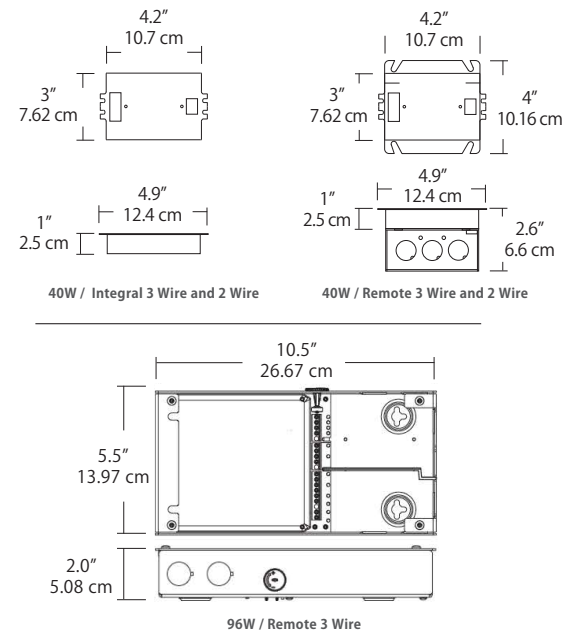


## II. LUTRON Hi-Lume Drivers

Continuous flicker-free dimming, auto reset, short circuit, overload and thermal protection  
Compatible with most Lutron dimming control systems



Watts	Output Volts	Input Volts	Mounting	Comments
40W	24V	120V - 277V	- Inside Canopy	3 Wire (27E) Dims 100% - 1%
40W	24V	120V	- Inside Canopy	2 Wire (12T) Dims 100% - 1%
40W	24V	120V - 277V	- Remote	3 Wire (27E) Dims 100% - 1%
40W	24V	120V	- Remote	2 Wire (12T) Dims 100% - 1%
96W	24V	120V - 277V	- Remote	3 Wire (27E) Dims 100% - 1%



## ORDERING GUIDE

### Category

PS

PS Power Supply

### Type

94ST Standard (Universal)  
94LT Lutron  
94CS Customer Specification

### Watts

15W 15 Watts  
20W 20 Watts  
40W 40 Watts  
60W 60 Watts  
96W 96 Watts

### Dimming

12T TRIAC Dimming  
27U 120-277V/ Universal  
Dimming (TRIAC, ELV, 0-10V)  
27E 120-277V/ Lutron EcoSystem

### Mounting

IN Integral  
RE Remote

Example: PS-94ST-96W-27U-RE