

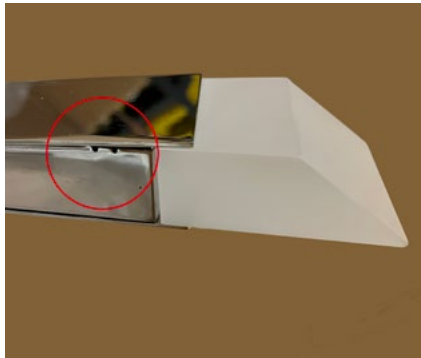
CAUTION

TURN OFF THE MAIN POWER AT THE CIRCUIT BREAKER BEFORE INSTALLING THE FIXTURE IN ORDER TO PREVENT POSSIBLE SHOCK

IF YOU ARE UNFAMILIAR WITH PROPER ELECTRICAL WIRING CONNECTIONS OBTAIN THE SERVICES OF A QUALIFIED ELECTRICIAN

NOTE: When several arms are not illuminated, it is usually only one bad Tri-Pin LED preventing the others from illuminating. To fix this, please replace one Tri-Pin LED at a time with new Tri-Pin LED sent from factory.

INSTALLATION



STEP 1: Locate side of the arm with two pin holes.



STEP 2: Push light guide toward the side with two pin holes.



STEP 3: Gently push light guide all the way over until you see the side of the arm bend slightly.



STEP 4: Gently twist and pull the light guide until separated.



STEP 5: Using needle-nosed pliers, remove Tri-Pin LED.



STEP 6: Using needle-nosed pliers, insert new Tri-Pin LED.

Repeat Steps 1-6 as necessary until all light guides are illuminated.

Click [here](#) for helpful instructions to remove acrylic light guide (Steps 1-4).

