

## CAUTION

TURN OFF THE MAIN POWER AT THE CIRCUIT BREAKER BEFORE INSTALLING THE FIXTURE IN ORDER TO PREVENT POSSIBLE SHOCK

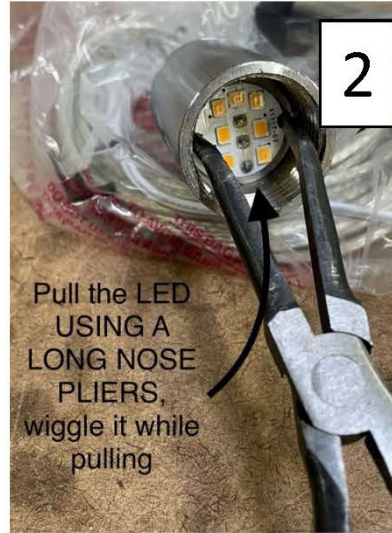
IF YOU ARE UNFAMILIAR WITH PROPER ELECTRICAL WIRING CONNECTIONS OBTAIN THE SERVICES OF A QUALIFIED ELECTRICIAN

## INSTALLATION

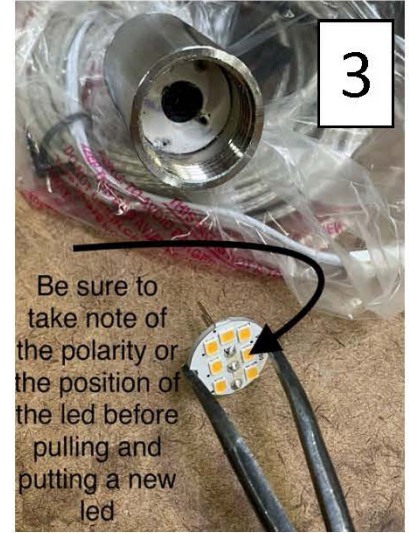


1. UNSCREW THE LIGHT GUIDE.

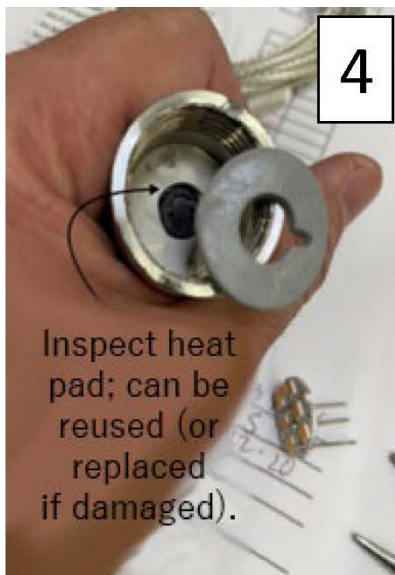
1A. REMOVE TWO HOLD-DOWN SCREWS ON EITHER SIDE OF ROUND BOARD (if present).



2. PULL THE LED WITH A LONGNOSE PLIERS.



3. CHECK POSITION OF LED.



4. INSPECT HEAT PAD. HEAT PAD SHOULD SIT FLAT AGAINST BACK OF SOCKET.



5. TAKE NOTE OF THE POLARITY AND LEG POSITIONS.



6. FIRMLY PUSH LED INTO THE SOCKET AGAINST THE HEAT PAD.  
6A. REINSTALL HOLD-DOWN SCREWS (if removed).